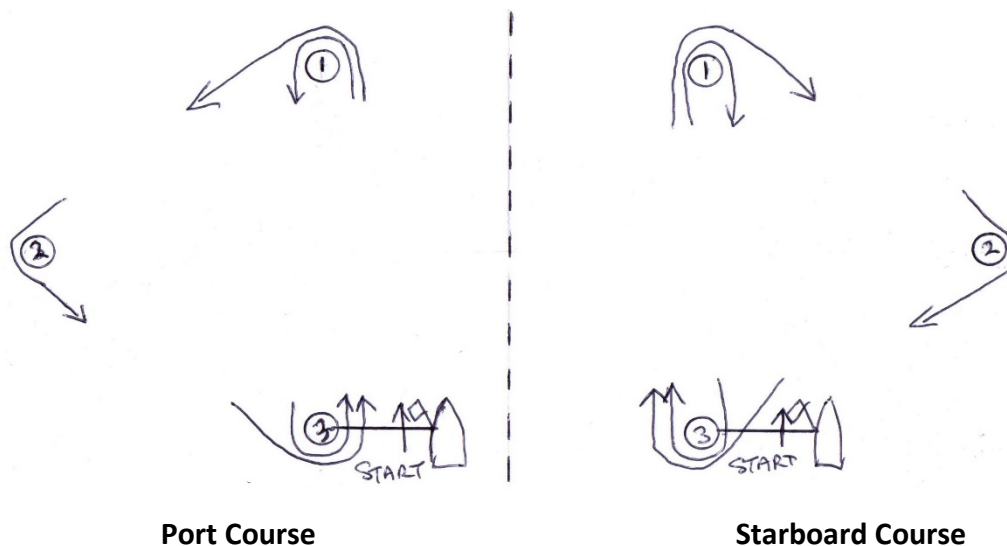


## Lake Wellington Yacht Club 2021-22 Club Racing Season Sailing Instructions

# Appendix A: Courses

The course to be sailed will be indicated by a course board and flag displayed by the start vessel.

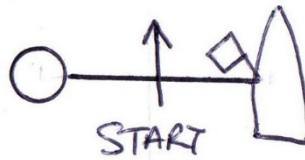
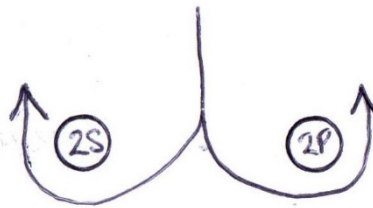
### Course C1 and C2



A **port course** will be indicated by a red flag flown from the start vessel. A **starboard course** will be indicated by a green flag flown from the start vessel.

Signal	Mark rounding order
C1	Start-1-2-3-1-3-1-2-3-Finish
C2	Start-1-2-3-1-3-Finish

## Course C3 and C4



Signal	Mark rounding order
C3	Start-1-2S/2P-1-2S/2P-1-2S/2P-Finish
C4	Start-1-2S/2P-1-2S/2P-Finish